

## Requires Core Deposit. All Cores Must Be Rebuildable.

Rebuilt Trailing Arms Require a \$375.00 Core Charge for Disc Brakes & \$474.00 for Drum Brakes. All Cores Must Be in Rebuildable Condition. Any Bad or Damaged Components Will be Deducted from the Total Core Value at Our Replacement Cost. Please realize that your Trailing Arm Assemblies are very old. Most of the time when cores are sent in, there are core deductions. Arms get rusted out, spindles are out of tolerance etc. If a part is not rebuildable, it is labeled with the customer's name and invoice number. Bad Parts can be returned at customer's expense.

Drum Brake Core Prices: 1963-65 Drum Brake Corvette Trailing Arm Core. Charges for non rebuildable parts are as follows. Arm \$165.00, Bearing housing \$99.00, Spacer Bearing \$31. Flange Half shaft \$54.00. Bad "Backing" Shoe Plate for 1963-65 Drum Brake \$125.00

Disc Brake Core Prices: 1965-82 Corvette Disc Trailing Arm Core. Charges for non rebuildable parts are as follows. Arm \$145.00, Bearing housing \$99.00, Caliper bracket \$46.00. Spacer Bearing \$31. Flange Halfshaft \$54.00. \$50.00 if shock mount is attached to bearing housing, \$50 if t-arm bolt is in t-arm bushing. \$30.00 Drill Fee for Each Rotor still Rivited to Spindle.

## Examples Of Bad Trailing Arm Components.

Bent Trailing Arm



Rusted Trailing Arm



Damaged Spindle Thread

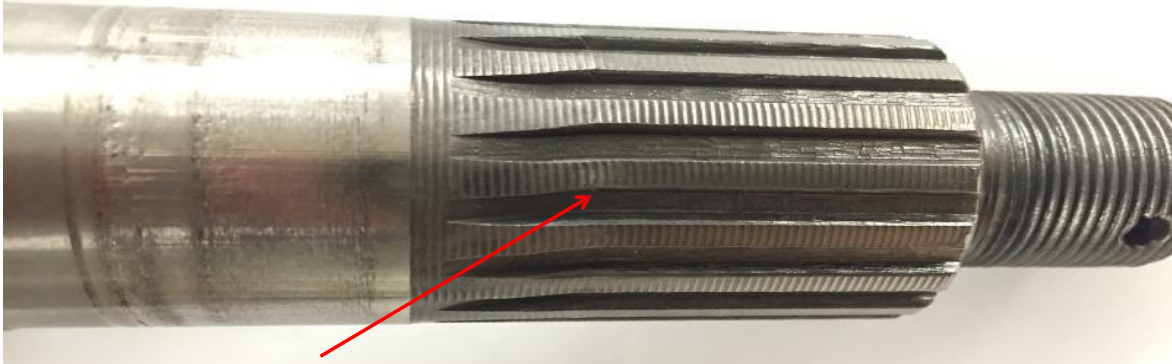


Caliper Mounting Bracket With Bad Heli Coil



Damaged Shock Mount Hole





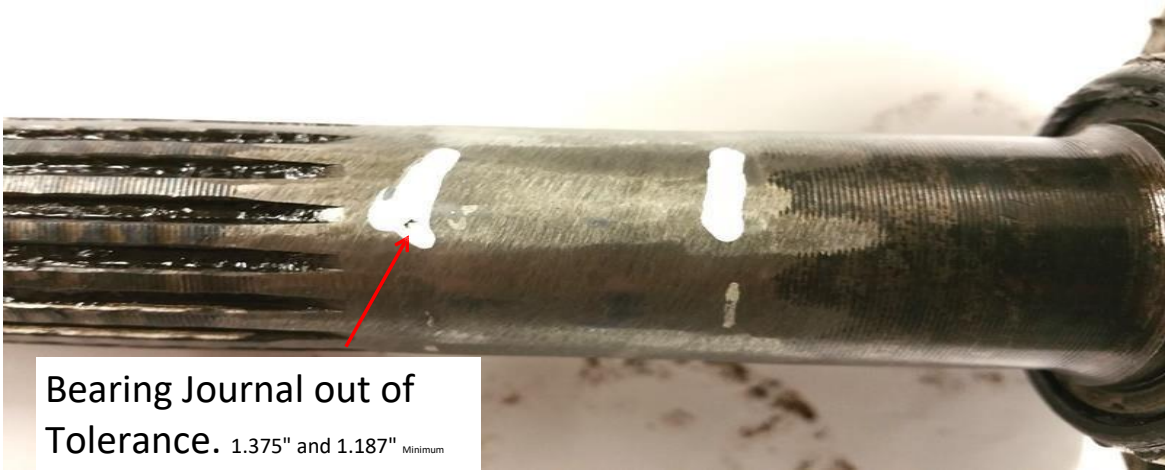
Twisted Spindle



Damaged Bearing Housing/  
Shock mount Hole



Enlarged Wheel Stud Hole



Bearing Journal out of Tolerance. 1.375" and 1.187" Minimum



Maximum Runout on Spindle is .003"